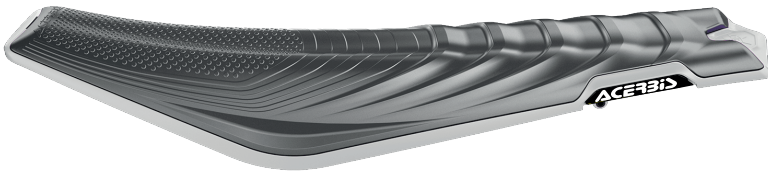


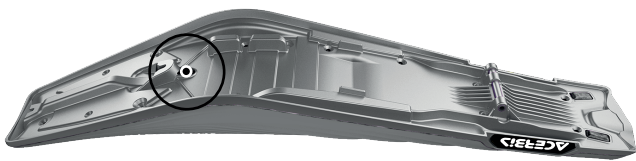
X-SEAT AIR KTM SELLA X-SEAT AIR KTM

COD. 500006087 REV.2

ACERBIS PARTS

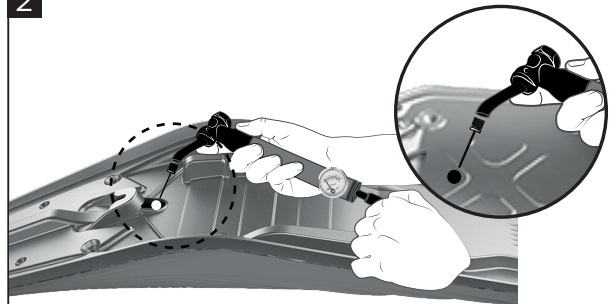


1



The inflation valve is located under the seat. A manual hand pump is required to inflate the seat.
Sotto la sella si trova la valvola di gonfiaggio.

2



To inflate the internal bladder connect the included needle tip to the pump and insert into the seat. For best results lube the needle with a silicone based lubricant.

Gonfiare aria nel cuscino tramite la pompa manuale e la valvola in dotazione. Si consiglia per un miglior inserimento dell'ago nella valvola, di usare del grasso silconico.



HARD/HIGH



SOFT/LOW

The X-SEAT AIR features an internal inflatable bladder. The firmness/height of the seat changes based on how much pressure is in the internal bladder.

All'interno della X-SEAT AIR è presente un cuscino ad aria gonfiabile. Per ottenere diverse durezze/altezze, variare la pressione del cuscino.

WARNING:

The plastic bottom of the X-SEAT AIR will flex and deform depending on how much air pressure has been added to the seat. This is normal and does not affect performance.

ATTENZIONE:

quando il cuscino viene gonfiato, deforma il fondo in plastica. Questo non causa rottura o difettosità della sella, ma è la naturale deformazione data dalla pressione dell'aria.



WARNING:

Do not overinflate the bladder. Min pressure is 0.35 bar - Max pressure is 0.70 bar.

ATTENZIONE:

Utilizzare solo pompe manuali. Non utilizzare compressori. Min pressione 0.35 bar - Max pressione 0.70 bar.

WARNING:

For avoid deformation, deflate the seat if remove it of the bike and unused.

ATTENZIONE:

Per evitare deformazioni, sgonfiare la sella se rimossa dalla moto e non utilizzata.

WARNING!

Use Acerbis' products at your own risk. Check the safety of your device before you ride. Be sure that you follow the instructions for installing the Acerbis' products. Do not ride if there is missing or damaged hardware. If this is the case, take the item immediately back to your dealer. Make sure the throttle and other controls are free every time you ride. Not following these instructions and warnings could lead to interference with the controls, loss of control, and accidents. Acerbis recommends that installation must be done by a licensed mechanic and that only Acerbis' original parts are used during installation. Acerbis makes no guarantees or representations, express or implied, regarding the fitment of its product for any particular purpose. Acerbis makes no guarantees or representations, express or implied, regarding the extent to which its products protect individuals or property from injury or death or damage.

EUROPE

ACERBIS ITALIA S.P.A.
VIA SERIO, 37
24021 ALBINO (BG)
ITALY

U.S.A.

ACERBIS U.S.A. INC.
MAIL P.O. BOX 2030
SUN VALLEY, ID 83353
SHIP 110 LINDAY CIRCLE
KETCHUM, ID 83340
U.S.A.

UNITED KINGDOM

ACERBIS U.K LTD
UNIT 4 DUNFERMLINE COURT,
KINGSTON, MILTON KEYNES
MK10 0BY
GREAT BRITAIN